

Figure 4. Beers Atlas, 1873, prior to Haskell's Establishment.

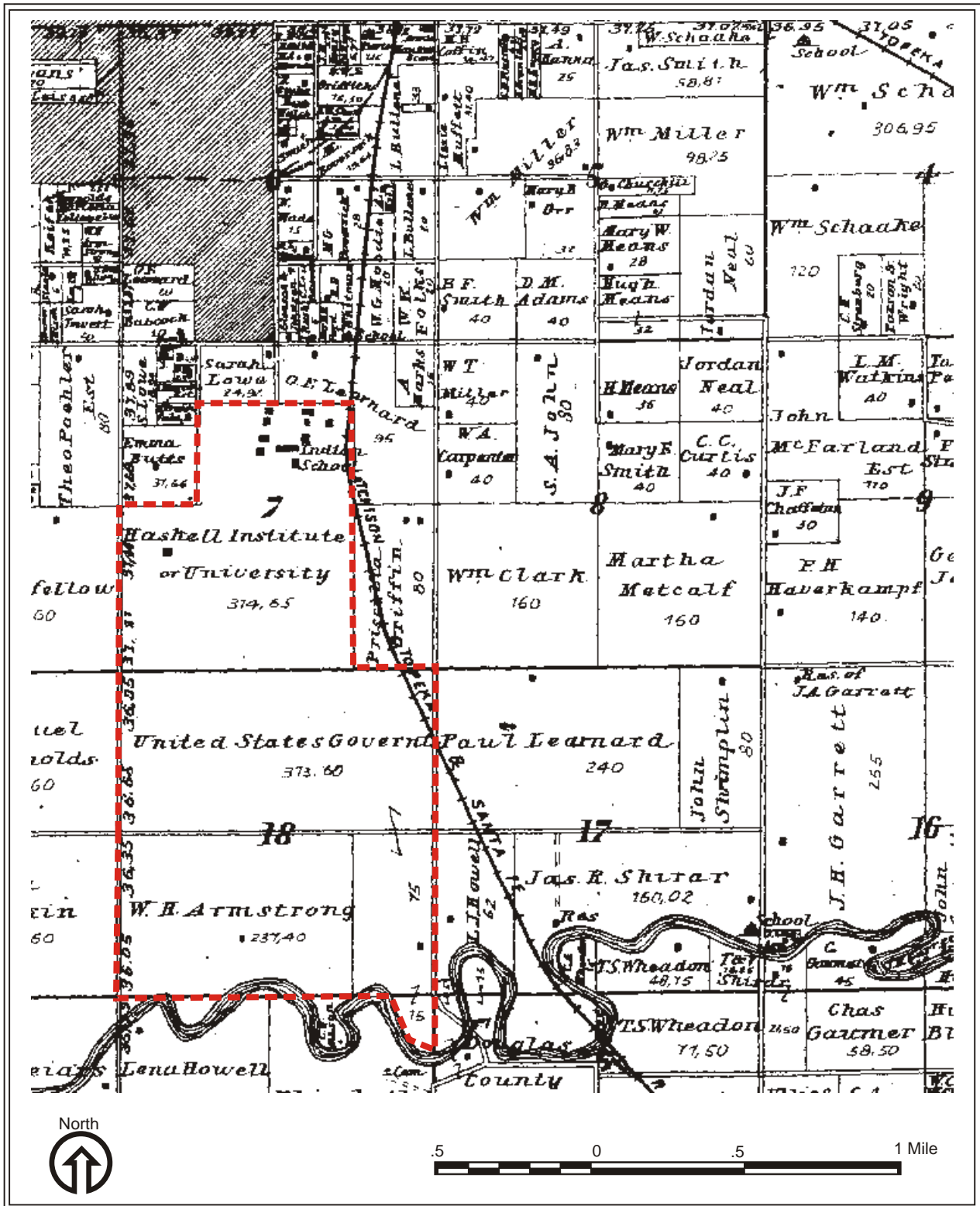


Figure 5. Ogle Atlas, 1902, showing Haskell/U.S. Government Land. Armstrong Sold Parcel to Government in 1902.

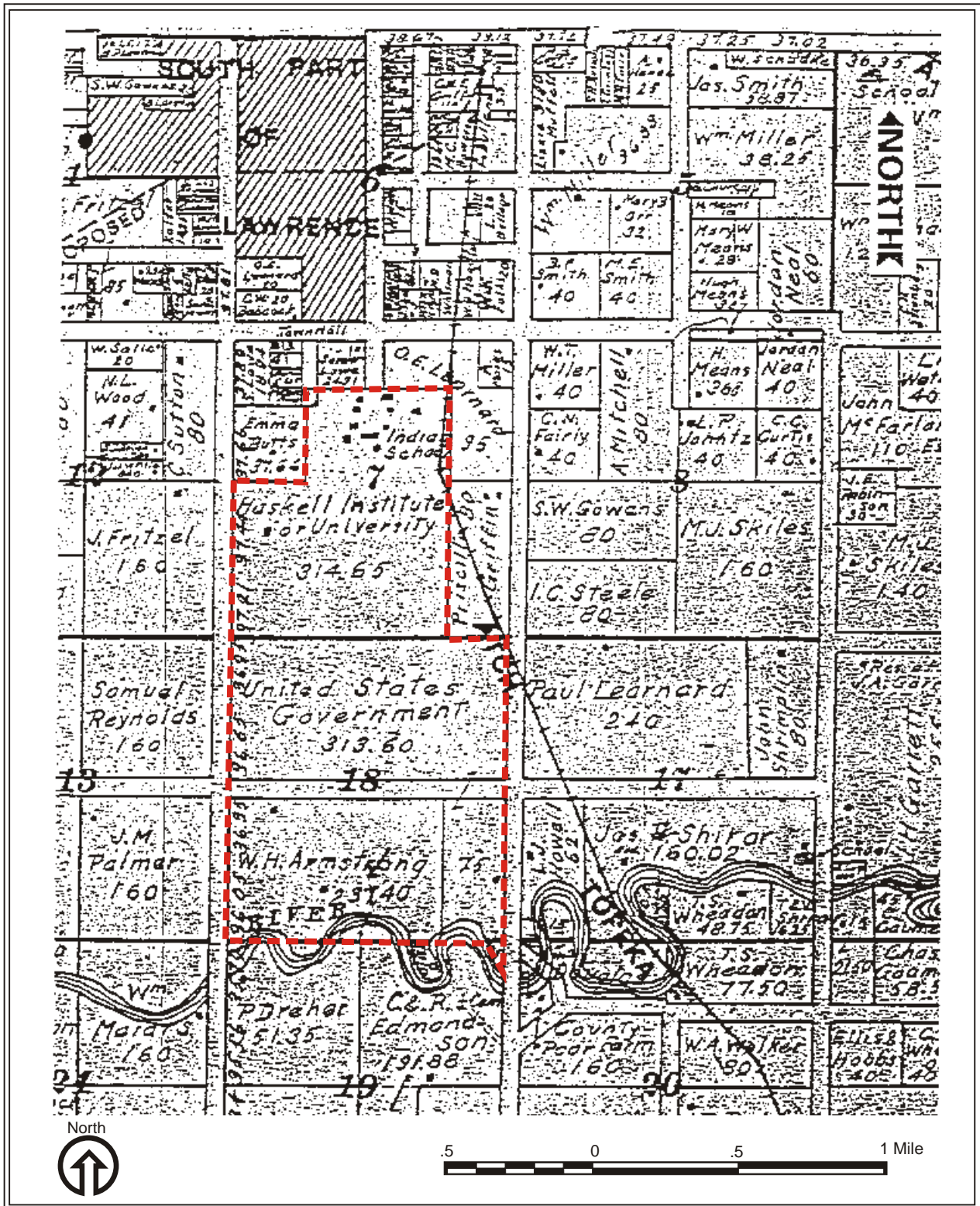


Figure 6. Shanklin Atlas, 1909, showing Haskell/U.S. Government Lands. Armstrong Parcel Had Actually Been Sold to Government in 1902.

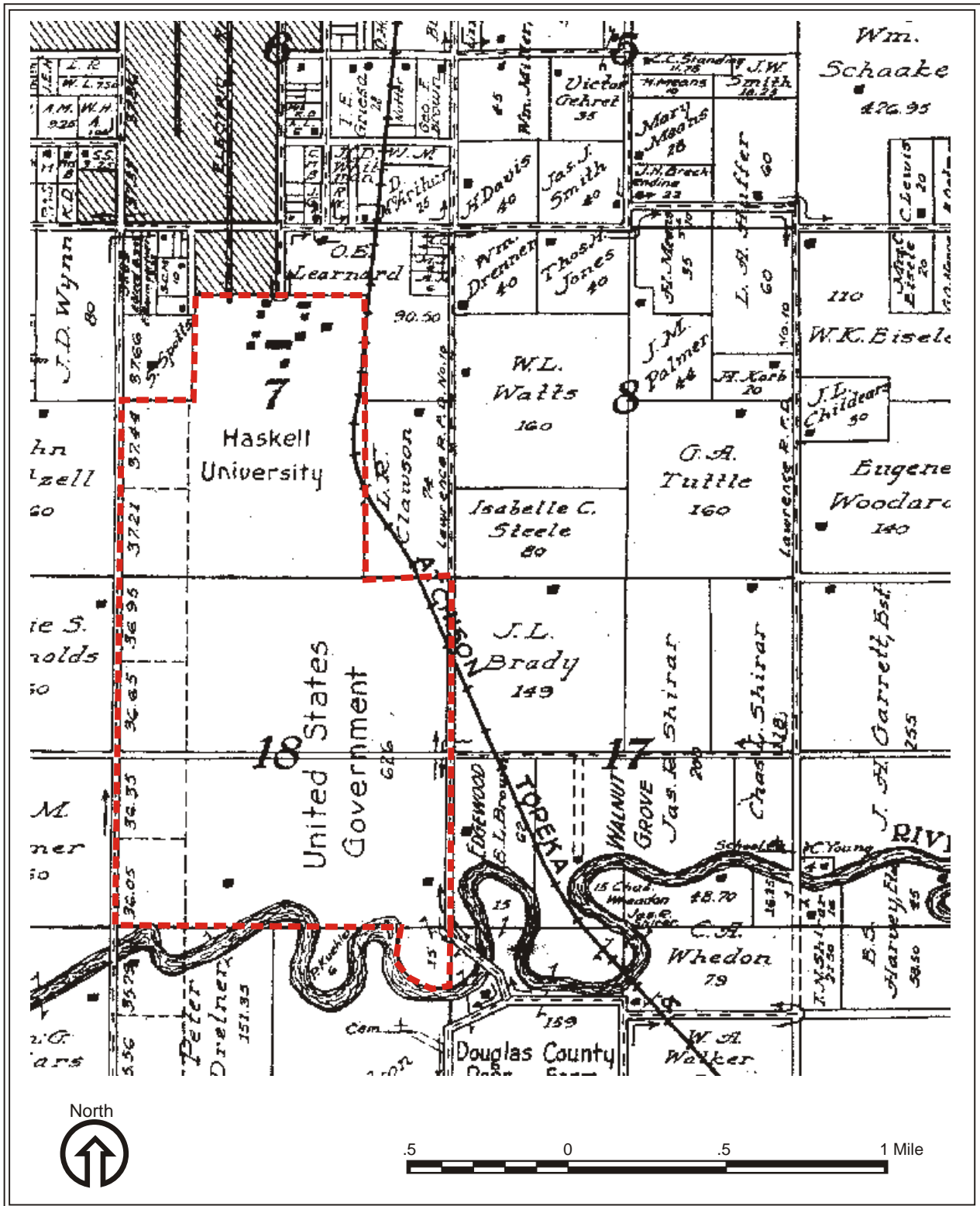


Figure 7. Ogle Atlas, 1921, showing Haskell/U.S. Government Lands.